



# Southbank

FROM \$915,990



4



2



2

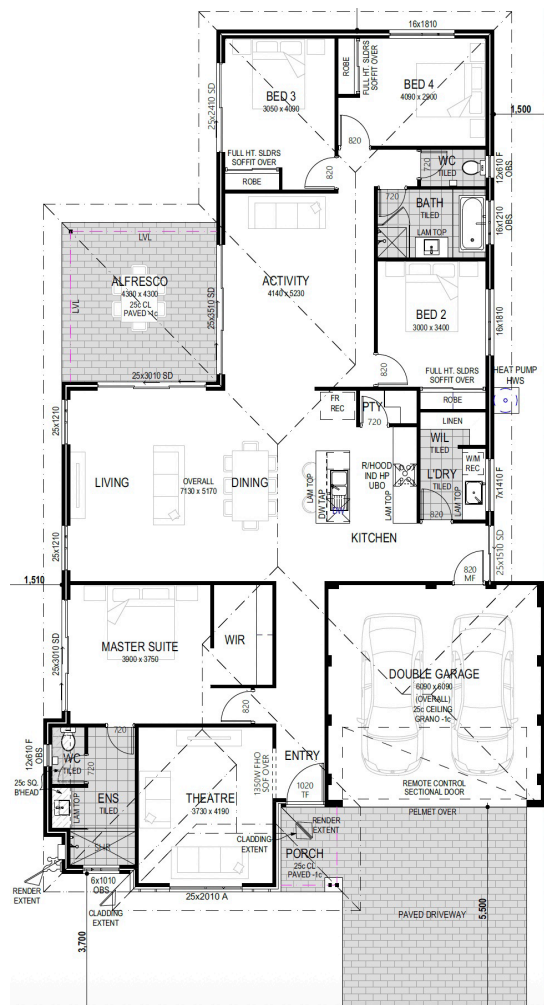


570m<sup>2</sup>



15m

- Price includes site cost estimate, land and build.
- 3 Living Spaces
- Games Room, Theatre, Scullery, and Alfresco
- Wulfe Heat Pump hot water unit, gas free, induction cooktop
- Choice of 3 elevations
- Choice of 3 interior design packages



New Homes Consultant

**Emily Bignell 0438 076 066**

\* Terms and conditions apply. See builder website and specific package for full terms and conditions. Price correct at time of publication and is subject to change. Images and landscaping are for illustrative purposes. House and land sold separately. York Property Group is not the builder of the home, The home is advertised by agreement between York Property Group and the builder, SW1 Homes. Advertised price does not include transfer duty, settlement costs and other settlement of the land fees. Provisional sum for site works included in price.

**Birdwood** **SW1**  
 COWARAMUP • MASTERPLANNED COMMUNITY  
 Homes