



The Airlie

FROM \$850,258



4



2



2



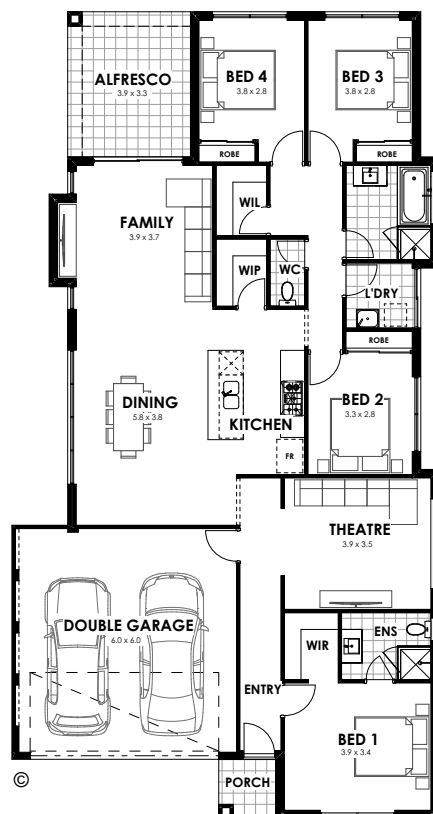
900m²



18m

Summary of Design:

- Double clay brick construction
- BlueScope Colorbond® steel roof
- 100mm reinforced concrete slab to ground floor
- Contemporary stone bench tops to kitchen
- Designer kitchen with stainless steel appliances and breakfast bar
- Carpets & Floor tiling
- Spacious double lock-up garage and outdoor alfresco entertaining area under the main roof
- Backed by the Shelford Build with Confidence Guarantee and Shelford Lifetime Warranty



New Homes Consultant

Taya Craven 0461 359 534

* Terms and conditions apply. See builder website and specific package for full terms and conditions. Price correct at time of publication and is subject to change. Images and landscaping are for illustrative purposes. House and land sold separately. York Property Group is not the builder of the home. The home is advertised by agreement between York Property Group and the builder, Shelford Homes. Advertised price does not include transfer duty, settlement costs and other settlement of the land fees. Provisional sum for site works included in price.

Birdwood
COWARAMUP • MASTERPLANNED COMMUNITY

SHELFORD
QUALITY HOMES